



Manchester
Metropolitan
University

WESLEY MEETS ART *Auction*

To mark the closing of the exhibition Wesley Meets Art
MMU Special Collections will hold an auction of work made
for the project in

MMU Special Collections Gallery,
Manchester Metropolitan University
3rd floor, Sir Kenneth Green Library
All Saints, Oxford Road, Manchester, M15 6BH

Wednesday 18th February 6.00pm

Special preview with drinks 4.30 – 5.30pm

With guest auctioneer
ERIC KNOWLES
from the BBC's *Antiques Roadshow*

All money raised will go to
Wesley Community Furniture, Manchester
Registered Charity Number 1116806

To view the auction lots, visit the
Wesley Meets Art exhibition in the
MMU Special Collections Gallery
8th December 2008 – 20th February 2009
Mon to Fri 10.00 – 16.00
Thurs 10.00 – 19.00

If you are interested in buying any
of the work you will need to register
for the auction, by contacting
Pat Kelly at p.kelly@mmu.ac.uk
or telephone **0161 247 3096**



WESLEY MEETS ART

This exhibition is the result of a collaborative project between artists Cj O'Neill and Lee Garland and the staff and volunteers of Wesley Community Furniture, Manchester. Conceived by Cj O'Neill, the intention of the project was to document the activities, objects and the people who work with the charity through documentary photography and interviews, interpreting and developing this in a number of ways, in order to create works and artefacts that extend the output of the artists, develop interesting perspectives and create works that could be later sold to raise money and awareness for the charity.

The Wesley supplies furniture, domestic appliances, household goods and clothing at the lowest possible prices to those in greatest need from all over the City of Manchester. They collect donations of most household items city wide. These are then sorted, stored and sold from their shops and delivered (for a nominal charge) to those in need. For more information about **Wesley Community Furniture** visit www.thewesley.org.uk or telephone: **0161 226 9051**.

Manchester Metropolitan University Special Collections has acted as catalyst for the project, with Cj taking inspiration from ceramics by William De Morgan in the collections to create contemporary interpretations of these as well as developing further pattern and symbols, using transfers and waterjet cutting. Lee has looked at a range of photography and prints from the collection to provide a historical context for his portraiture and architectural photography of the charity.

Cj O'Neill is a ceramicist who re-uses existing ceramics and creates patterns and silhouettes to develop new decorative imagery. In this case she has collected patterns from objects in the Wesley's Lloyd Street shop developing silhouettes which are in turn applied to ceramic pieces bought from the charity to create her Wesley Collection. www.cjoneill.co.uk

Lee Garland is interested in architectural spaces and has documented the interiors, the buildings and location as well as the people who are central to the project. www.leegarlandphotography.co.uk

Interested buyers must be registered prior to the auction.

Registration contact:

Pat Kelly at p.kelly@mmu.ac.uk or telephone **0161 247 3096**

Registration will close at 5.00pm on Wednesday 18th February

Advance bids and bids by proxy, email and telephone can be placed.

To register and for any other information please contact Pat Kelly at p.kelly@mmu.ac.uk or telephone 0161 247 3096.

Items can be held for 14 days after the sale.

All transport arrangements are the buyer's responsibility by arrangement.

Payment by cash or cheque only.

Conditions of sale will be forwarded on registration and are also available on request.

With the exception of the Kirkens Collection, all items are auctioned on behalf of Wesley Community Furniture.

Only items listed in the auction catalogue will be for sale. Items from the MMU Special Collections or on loan from the makers are not available for sale.

For more information about the MMU Special Collections or to make an appointment to use the collections for private study or teaching, please visit our website at www.specialcollections.mmu.ac.uk or contact us on tel: **0161 247 6107**
email: lib-spec-coll@mmu.ac.uk

This publication is available in alternative formats.

Please telephone 0161 247 3096.



Lot #48 ▲



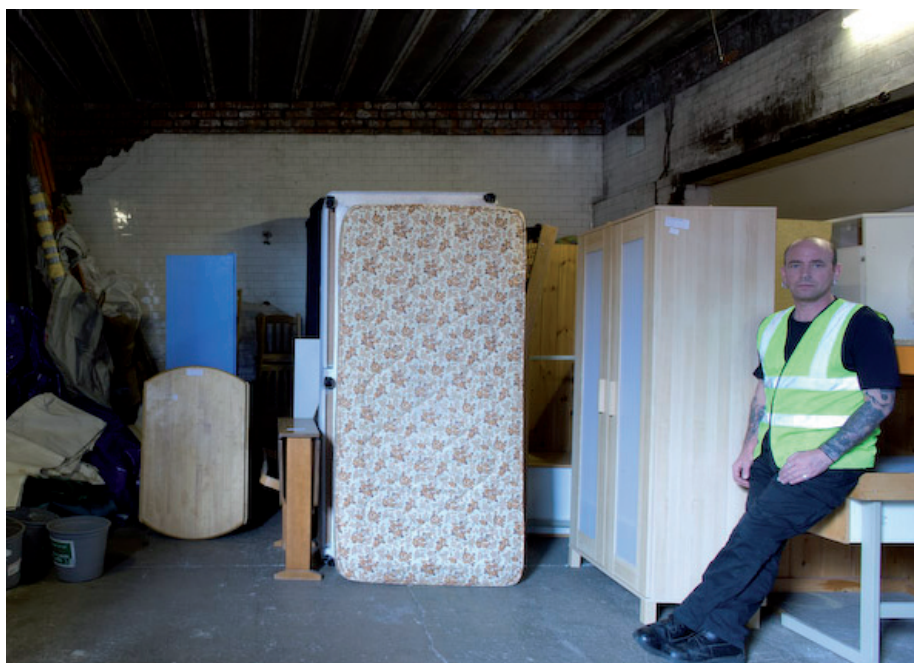
Lot #35 ▲



Wesley Backstamp ▲



Lot #34 ▲



Lot #52 ▲

1. Cj O'Neill, 2008. 75-100 Wesley portrait plate. Diamond China porcelain. † ‡ diam.155mm
2. Cj O'Neill, 2008. 75-100 Wesley portrait plate. Winterton porcelain. † ‡ diam. 205mm
3. Cj O'Neill, 2008. 75-100 Wesley portrait plate. Cmeilow. † diam.140mm
4. Cj O'Neill, 2008. 40-50 Wesley portrait plate. Regency English Bone China † diam.155mm
5. Cj O'Neill, 2008. 75-100 Wesley portrait plate. † diam.140mm
6. Cj O'Neill, 2008. 40-50 Wesley portrait plate. Blackberry design on Empire Porcelain. † diam. 175mm
7. Cj O'Neill, 2008. 50-60 Wesley portrait plate. Ridgeway's Queen Anne porcelain. † diam.160mm
8. Cj O'Neill, 2008. 40-50 Wesley portrait plate. † diam.120mm
9. Cj O'Neill, 2008. 90-110 "Cj". Portrait plate. Pink with gold portrait silhouette. † diam. 85mm
10. Cj O'Neill, 2008. 90-110 "Lee". Portrait plates. Blue with gold portrait silhouette. † diam. 85mm
11. Cj O'Neill, 2008. 50-60 Wesley portrait plate. Dudson. † diam.100mm
12. Cj O'Neill, 2008. 40-50 Wesley portrait plate. Wetherby. † diam.145mm
13. Cj O'Neill, 2008. 40-50 Wesley portrait plate. † diam.115mm
14. Cj O'Neill, 2008. 75-100 Wesley portrait plate. Cmeilow. † ‡ diam.140mm
15. Cj O'Neill, 2008. 50-60 Wesley portrait plate. Regency English Bone China. † ‡ diam.140mm
16. Cj O'Neill, 2008. 40-50 Wesley portrait plate. Chinese mark. † ‡ diam.115mm
17. Cj O'Neill, 2008. 50-60 Wesley portrait plate. Made in china. † diam.105mm
18. Cj O'Neill, 2008. 40-50 Wesley portrait plate. Wetherby. † diam.145mm
19. Cj O'Neill, 2008. 50-60 Wesley portrait plate. Broadhurst Ironstone "Newlyn". † diam. diam.165mm
20. Cj O'Neill, 2008. 75-100 Wesley portrait plate. Cmeilow † diam.140mm
21. Cj O'Neill, 2008. 40-50 Wesley portrait plate. † diam.140mm
22. Cj O'Neill, 2008. 50-60 Wesley portrait plate. Grindley and Co. "Mayflower". diam.100mm
23. Cj O'Neill, 2008. 40-50 Wesley portrait plate. Wetherby. diam.175mm
24. Cj O'Neill, 2008. 20-30 "A Present from Wesley". Queen Anne. § diam.160mm
25. Cj O'Neill, 2008. 20-30 "A Present from Wesley". Diamond China.§ diam.155mm
26. Cj O'Neill, 2008. 150-180 Experimental design for De Morgan Peacock series in black. † diam.240mm
27. Cj O'Neill, 2008. 150-180 Experimental design for De Morgan Peacock series in red. Barratts "Old Castle". diam.250mm
28. Cj O'Neill, 2008. 100-120 Experimental design for De Morgan Peacock series in gold § diam.135mm
29. Cj O'Neill, 2008. 120-150 Experimental design for De Morgan Peacock series in gold. Brindley Broadhurst Bros. § diam.220mm
30. Cj O'Neill, 2008. 75-100 "The heart is above all things..." Pair of plates. Minton "Ardmore" † diam.160mm
31. Cj O'Neill, 2008. 50-70 Experimental design for Wesley series in black on pink. Cmeilow † diam.140mm
32. Cj O'Neill, 2008. 100-120 Experimental design for Wesley series in black on green and white. Alfred Meakin. † ‡ diam.220mm
33. Cj O'Neill, 2008. 200-250 De Morgan Peacock series. Water jet cut. Johnson Bros "Friendly Village". diam. 270mm
34. Cj O'Neill, 2008. 200-250 De Morgan Peacock series. Water jet cut. Landscape in red. diam.195mm
35. Lee Garland, 2008..... 75-100 Out-take (Clyve and Lisa). Digital print. h1000x w670mm
36. "Good sense – corset waist"..... 10-15 earthenware storage jar with wooden lid. Object from the Wesley shop. h210 x diam 120mm
37. Orange lustre glass jar with lid..... 10-15 Object from the Wesley shop. h190 x diam 140mm
38. Nursing cup..... 10-15 with red cross design. Object from the Wesley shop. h60 x l125mm
39. Haynes manual 10-15 for Ford Cortina mk IV. Object from the Wesley shop. h280x w210
40. Coronation tin..... 10-15 Object from the Wesley shop. h130 x w80mm
41. Cj O'Neill, 2008. 125-175 "De Morgan's Peacock 1". Plate. Water jet cut. Royal Victoria "Rose Bouquet". diam.250mm

42. Cj O'Neill, 2008. 125-175
"De Morgan's Peacock 2". Plate. Water jet cut. Diamond China. diam.230mm
43. Cj O'Neill, 2008. 125-175
"De Morgan's Peacock 3". Plate. Water jet cut. diam.255mm
44. Cj O'Neill, 2008. 125-175
"De Morgan's Peacock 4". Plate. Water jet cut. English Bone China. diam. 230mm
45. Cj O'Neill, 2008. 125-175
"De Morgan's Peacock 5". Plate. Water jet cut Duryea 1893. diam.265mm
46. Cj O'Neill, 2008. 100-130
"De Morgan's Peacock 6". Plate. Water jet cut. Queen Anne. diam.160mm
47. Cj O'Neill, 2008. 175-200
"De Morgan's Peacock Blue". Plate. Water jet cut. diam.250mm
48. Cj O'Neill, 2008. 200-250
 Self portrait plate with De Morgan design in red. Grindley. diam.250mm
49. Lee Garland, 2008. 150-200
"JP, Lloyd Street shop, September 2008" Digital print. h1000 x w2230mm
50. Lee Garland, 2008. 150-200
"Lisa, transport office of Lloyd Street shop, September 2008" Digital print. h1000 x w2230mm
51. Lee Garland, 2008. 150-200
"Nick, Girl and Terry, Withington shop, October 2008" Digital print. h1000 x w2230mm
52. Lee Garland, 2008. 150-200
"Nana, loading bay of the Lloyd Street shop, September 2008" Digital print. h1000 x w2230mm
53. Lee Garland, 2008. 50-75
"Duck" Digital print of object from Wesley shop. h570 x w570mm
54. Lee Garland, 2008. 50-75
"Favourite Greek Myths" Digital print of object from Wesley shop. h570 x w570mm
55. Lee Garland, 2008. 50-75
"Policeman hand puppet" Digital print of object from Wesley shop. h570 x w570mm
56. Lee Garland, 2008. 50-75
"Taps" Digital print of object from Wesley shop. h570 x w570mm
57. Lee Garland, 2008. 50-75
"Coronation tin" Digital print of object from Wesley shop. h570 x w570mm
58. Lee Garland, 2008. 50-75
"Monkey toys" Digital print of h570 x w570mm object from Wesley shop.
59. Lee Garland, 2008. 50-75
"Sink" Digital print of object from Wesley shop. h570 x w570mm
60. Lee Garland, 2008. 50-75
"Buggy" Digital print of object from Wesley shop. h570 x w570mm
61. Lee Garland, 2008. 50-75
"Guitar and stool" Digital print of object from Wesley shop. h570 x w570mm
62. Lee Garland, 2008. 50-75
"Glass jar" Digital print of object from Wesley shop. h570 x w570mm
63. Lee Garland, 2008. 50-75
"Trolley" Digital print of object from Wesley shop. h570 x w570mm
64. Lee Garland, 2008. 50-75
"Queen Elizabeth tray" Digital print of object from Wesley shop. h570 x w570mm
65. Lee Garland, 2008. 50-75
"Haynes Ford Cortina manual" Digital print of object from Wesley shop. h570 x w570mm
66. Lee Garland, 2008. 50-75
"Books" Digital print of object from Wesley shop. h570 x w570mm
67. Lee Garland, 2008. 50-75
"Hold-all" Digital print of object from Wesley shop. h570 x w570mm
68. Lee Garland, 2008. 150-200
"Richard, storage area of St Wilfred's shop, October 2008" Digital print. h1000 x w2230mm
69. Lee Garland, 2008. 150-200
"Chris, storage area of Lloyd Street shop, September 2008" Digital print. h1000 x w2230mm
70. Lee Garland, 2008. 150-200
"Customer, full furniture package, November 2008" Digital Print. h1000 x w2230mm
71. Photograph by staff/volunteer 5-10
 from the Wesley. Digital print in frame from Wesley shop ¶
72. Photograph by staff/volunteer 5-10
 from the Wesley. Digital print in frame from Wesley shop ¶
73. Photograph by staff/volunteer 5-10
 from the Wesley. Digital print in frame from Wesley shop ¶
74. Photograph by staff/volunteer 5-10
 from the Wesley. Digital print in frame from Wesley shop ¶
75. Photograph by staff/volunteer 5-10
 from the Wesley. Digital print in frame from Wesley shop ¶
76. Photograph by staff/volunteer 5-10
 from the Wesley. Digital print in frame from Wesley shop ¶
77. Photograph by staff/volunteer 5-10
 from the Wesley. Digital print in frame from Wesley shop ¶
78. Photograph by staff/volunteer 5-10
 from the Wesley. Digital print in frame from Wesley shop ¶
79. Photograph by staff/volunteer 5-10
 from the Wesley. Digital print in frame from Wesley shop ¶
80. Photograph by staff/volunteer 5-10
 from the Wesley. Digital print in frame from Wesley shop ¶

81. Photograph by staff/volunteer..... 5-10 from the Wesley. Digital print in frame from Wesley shop ¶
82. Photograph by staff/volunteer..... 5-10 from the Wesley. Digital print in frame from Wesley shop ¶
83. Photograph by staff/volunteer..... 5-10 from the Wesley. Digital print in frame from Wesley shop ¶
84. Photograph by staff/volunteer..... 5-10 from the Wesley. Digital print in frame from Wesley shop ¶
85. Photograph by staff/volunteer..... 5-10 from the Wesley. Digital print in frame from Wesley shop ¶
86. Photograph by staff/volunteer..... 5-10 from the Wesley. Digital print in frame from Wesley shop ¶
87. Photograph by staff/volunteer..... 5-10 from the Wesley. Digital print in frame from Wesley shop ¶
88. Photograph by staff/volunteer..... 5-10 from the Wesley. Digital print in frame from Wesley shop ¶
89. Photograph by staff/volunteer..... 5-10 from the Wesley. Digital print in frame from Wesley shop ¶
90. Photograph by staff/volunteer..... 5-10 from the Wesley. Digital print in frame from Wesley shop ¶
91. Photograph by staff/volunteer..... 5-10 from the Wesley. Digital print in frame from Wesley shop ¶
92. Cj O'Neill, 2008. 80-90 Kirkens Collection. Horse plate. Lyngby.* diam. 248mm
93. Cj O'Neill, 2008. 60-70 Kirkens Collection. Portrait plate. Lyngby.* diam. 165mm
94. Cj O'Neill, 2008. 60-70 Kirkens Collection. Portrait plate. Lyngby.* diam. 165mm
95. Cj O'Neill, 2008. 60-70 Kirkens Collection. Portrait plate. Lyngby.* diam. 165mm
96. Cj O'Neill, 2008. 50-60 Kirkens Collection. Portrait plate. Lyngby.* diam. 165mm
97. Lee Garland, 2008..... 25-30 Digital print. Portrait of Jo. (Wesley staff/volunteer). h480 x w320mm
98. Lee Garland, 2008..... 25-30 Digital print. Portrait of Richard. (Wesley staff/volunteer). h480 x w320mm
99. Lee Garland, 2008..... 25-30 Digital print. Portrait of Paul. (Wesley staff/volunteer). h480 x w320mm
100. Lee Garland, 2008..... 25-30 Digital print. Portrait of Gally. (Wesley staff/volunteer). h480 x w320mm
101. Lee Garland, 2008..... 25-30 Digital print. Portrait of BJ (Bimpe). (Wesley staff/volunteer). h480 x w320mm
102. Lee Garland, 2008..... 25-30 Digital print. Portrait of Madjik (Dave). (Wesley staff/volunteer). h480 x w320mm
103. Lee Garland, 2008..... 25-30 Digital print. Portrait of Shaun. (Wesley staff/volunteer). h480 x w320mm
104. Lee Garland, 2008..... 25-30 Digital print. Portrait of James. (Wesley staff/volunteer). h480 x w320mm
105. Lee Garland, 2008..... 25-30 Digital print. Portrait of Johnny. (Wesley staff/volunteer). h480 x w320mm
106. Lee Garland, 2008..... 25-30 Digital print. Portrait of Chris. (Wesley staff/volunteer). h480 x w320mm
107. Lee Garland, 2008..... 25-30 Digital print. Portrait of Clyve. (Wesley staff/volunteer). h480 x w320mm
108. Lee Garland, 2008..... 25-30 Digital print. Portrait of Lisa. (Wesley staff/volunteer). h480 x w320mm
109. Plate with recycling logo. 10-15 Clyve. This work was produced by staff at Wesley between August and December 2008. diam. 140mm ¶
110. "Weapons of Mass Destruction" 30-40 Plate. Paul. This work was produced by staff at Wesley between August and December 2008. diam. 190mm ¶
111. Silhouette plate..... 15-20 Paul. This work was produced by staff at Wesley between August and December 2008. diam. 150mm ¶
112. *Albert* plate 15-20 (the first monkey sent into space). Clyve. This work was produced by staff at Wesley between August and December 2008. diam. 195mm ¶

* *The Kirkens Collection* were made as part of Cj O'Neill's residency at Guldagergaard, Skaelskor, Denmark in 2008 where she worked with the charity Kirkens Korshærs, which raises money for displaced people across Denmark, providing shelters, meeting places for people from differing cultures, food and crèche facilities for families in need. Kirkens Korshærs is staffed entirely by volunteers. 20% of sales of these lots will go to Kirkens Korshærs and 20% to the Wesley Community Furniture. The remaining 60% goes to the artist.

† Wesley and makers mark

‡ Marked as made in Guldegaard

§ maker's mark only

¶ Please note that items made by Wesley staff and marked with a ¶ are going to Urbis for exhibition and can only be collected by buyers after May 1st 2009.